



Whale Fall Diorama

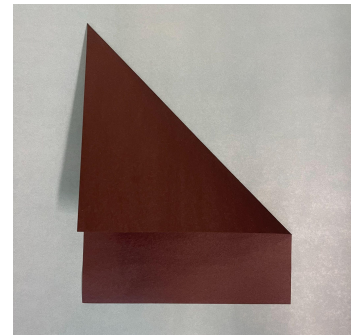
What happens when a whale dies at sea? Their body becomes an ecosystem! When a whale dies and sinks to the bottom of the ocean, it's called a whale fall. Whale falls provide a sudden explosion of food, supporting a rich community of deep-sea creatures for decades. Make your own mixed media diorama of a whale fall using paper, miscellaneous craft supplies, and your imagination!

Materials

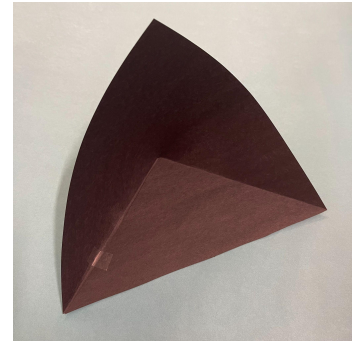
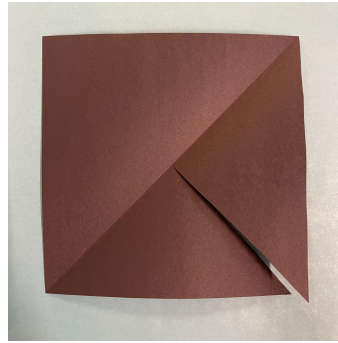
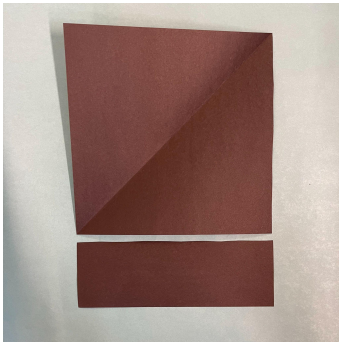
- 1 piece of black construction paper
- Crayons, colored pencils, or markers
- Scissors
- Tape
- Printed animal cut-outs (page 3)
- Miscellaneous craft supplies (cotton balls, pipe cleaners, tissue paper, etc.)

Directions

1. **Make** the diorama by following the directions below.
 - a. **Fold** a piece of black construction paper from one corner across to the opposite edge.
 - b. **Cut** off the bottom strip to reveal a square.

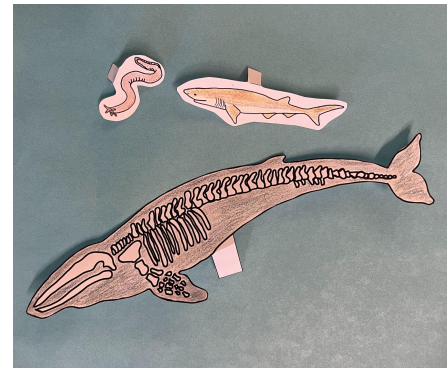
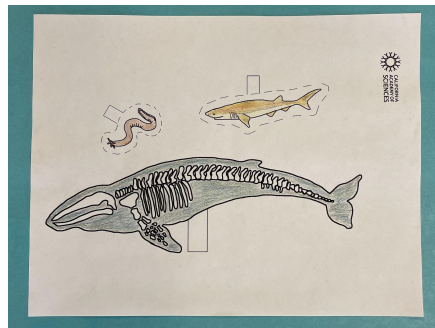


- c. **Cut** a slit from one corner to the middle of the square.
- d. **Fold** in the two smaller triangles to create the diorama, then **tape** down the edges.

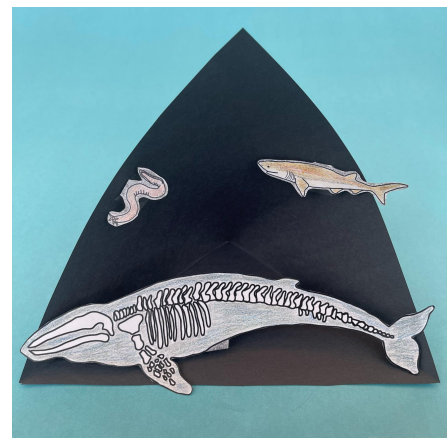


2. **Print** and **color** in the whale skeleton, hagfish, and sixgill shark.

3. **Cut out** the whale skeleton along the bolded whale outline, and **cut out** the hagfish and sixgill shark along the dotted line. **Fold back** the tab on each.



4. **Tape** the whale tab to the base of the diorama, and **tape** the hagfish and shark tabs to the sides of the diorama.
5. **Add** other deep-sea scavengers using miscellaneous craft materials! Here are just a few ideas:
 - a. Make a **Japanese spider crab** out of red pipe cleaners.
 - b. Use tissue paper or pulled-apart cotton balls to add ***Osedax* bone worms** or a **bacterial mat** to your whale skeleton.
 - c. Glue red sequins to the background to add deep-sea jellies, like **bloody-belly comb jellies**.





- d. Use beads or small pom-poms to add **pom-pom anemones** or **sea cucumbers** to the base of your diorama.
- e. Use modeling clay to make a deep-sea **octopus** or **sea pig**.
- f. Cut some cotton swabs to act as **disarticulated bones** and add them to the seafloor.

